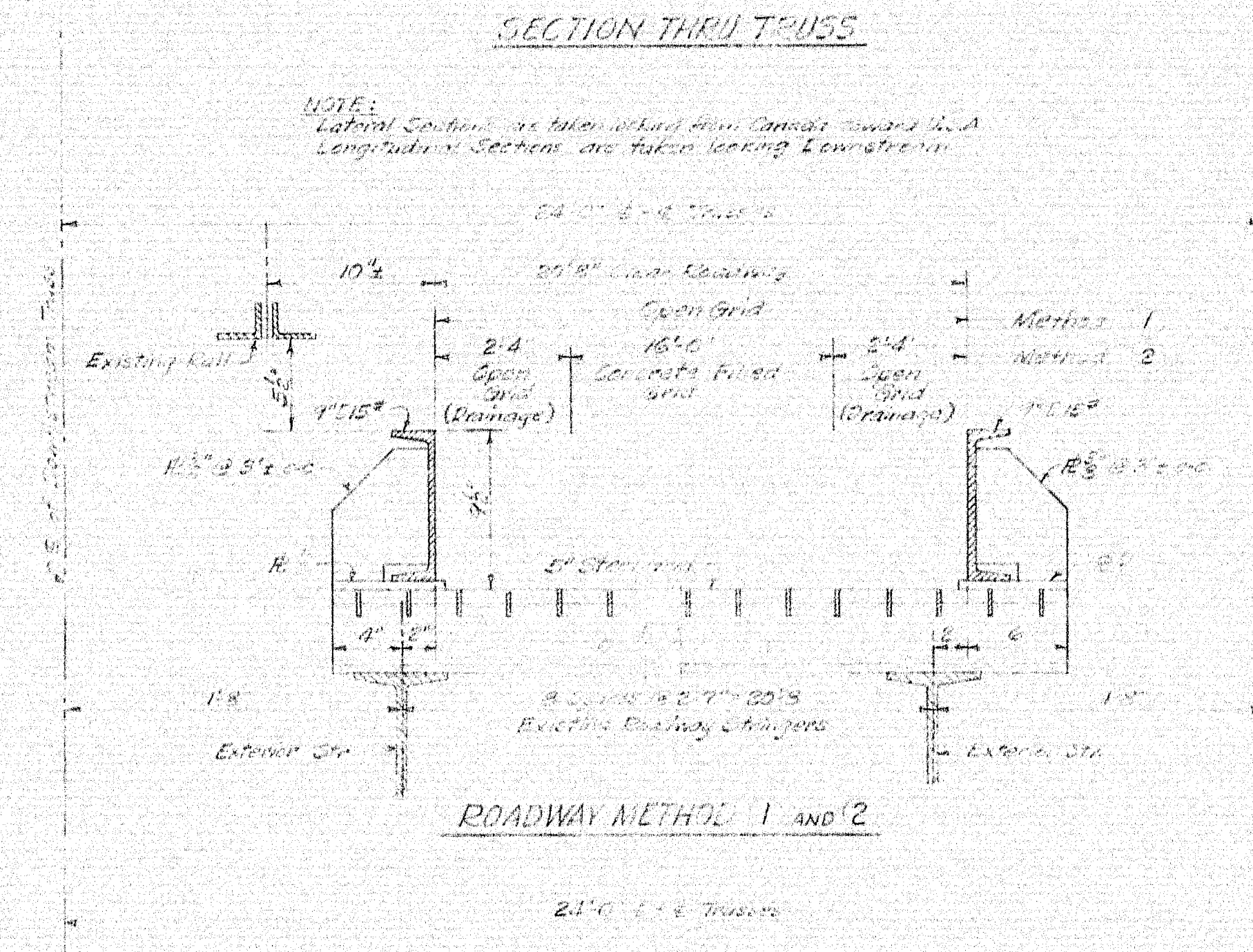


<h1 style="text-align: center;">FLOOR AND SIDEWALK RECONSTRUCTION</h1> <h2 style="text-align: center;">SUMMARY OF ESTIMATED COSTS</h2>	
ROADWAY	
METHOD	
1	5" Open Steel Grid No overstress in truss Under clearance 14'-4" \$770,000.
2	5" Steel Grid, part conc. filled No overstress in truss Under clearance 14'-4" \$186,730.
3	Precast Concrete Slab Ext. main roof facing overfilled Slight overstress in truss Under clearance 13'-11" \$124,020.
SIDEWALK	
METHOD	
1	2" Type Conc. filled Steel Grid On existing concrete slabs Not sloped for drainage \$34,760.
2	2" Type Conc. filled Steel Grid Replaced two tie beams Sloped for drainage \$36,550.
3	3" Steel Plank Sloped for drainage Reduced load at least \$37,000.
4	4" Plank Mount on existing skid \$10,000.

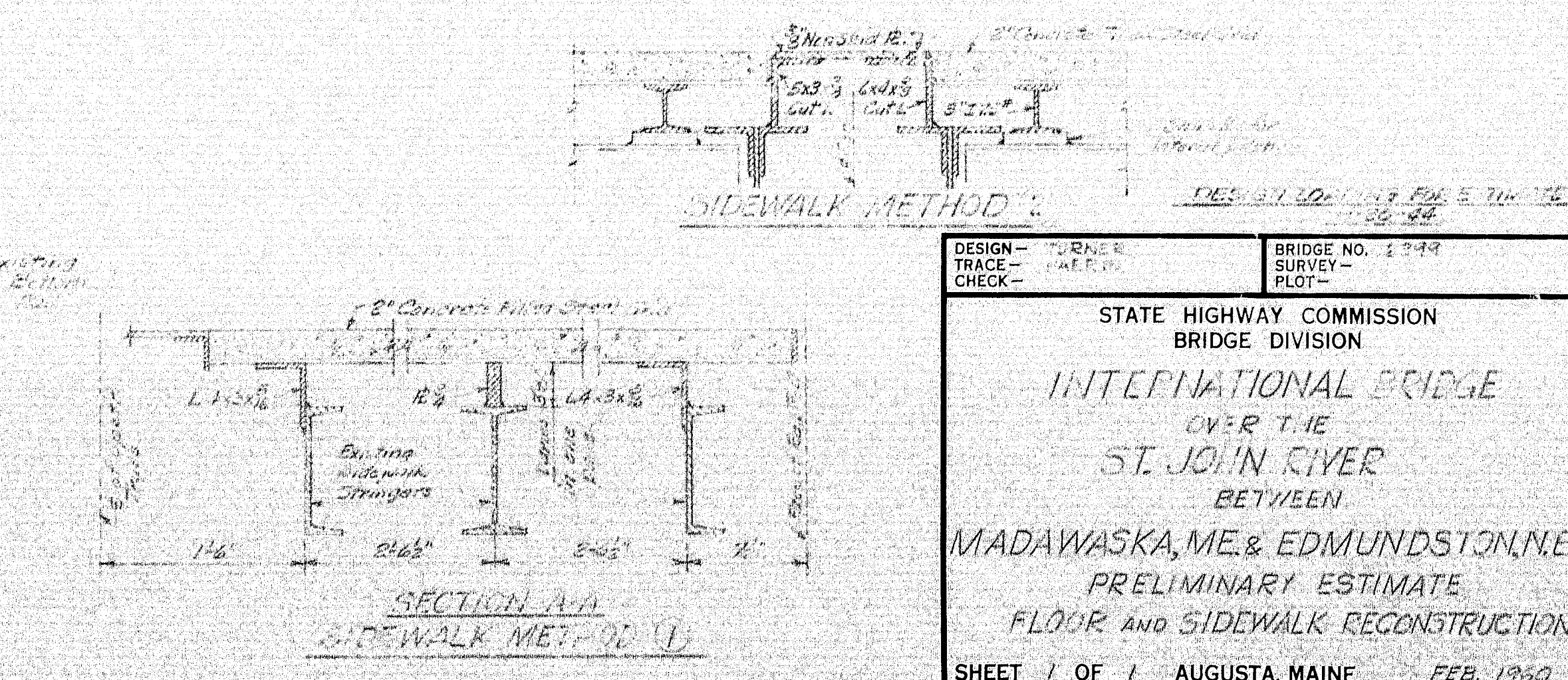
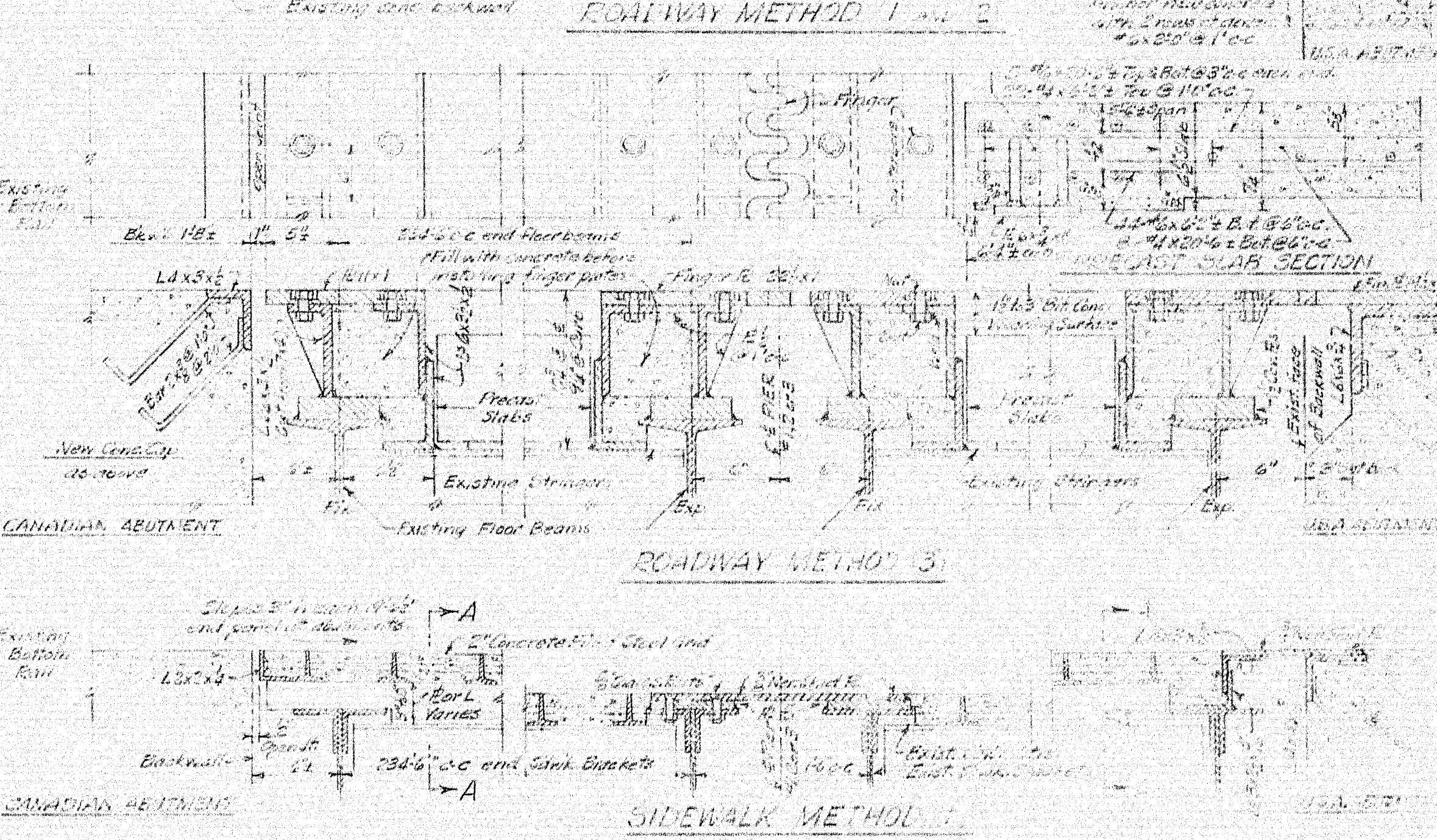
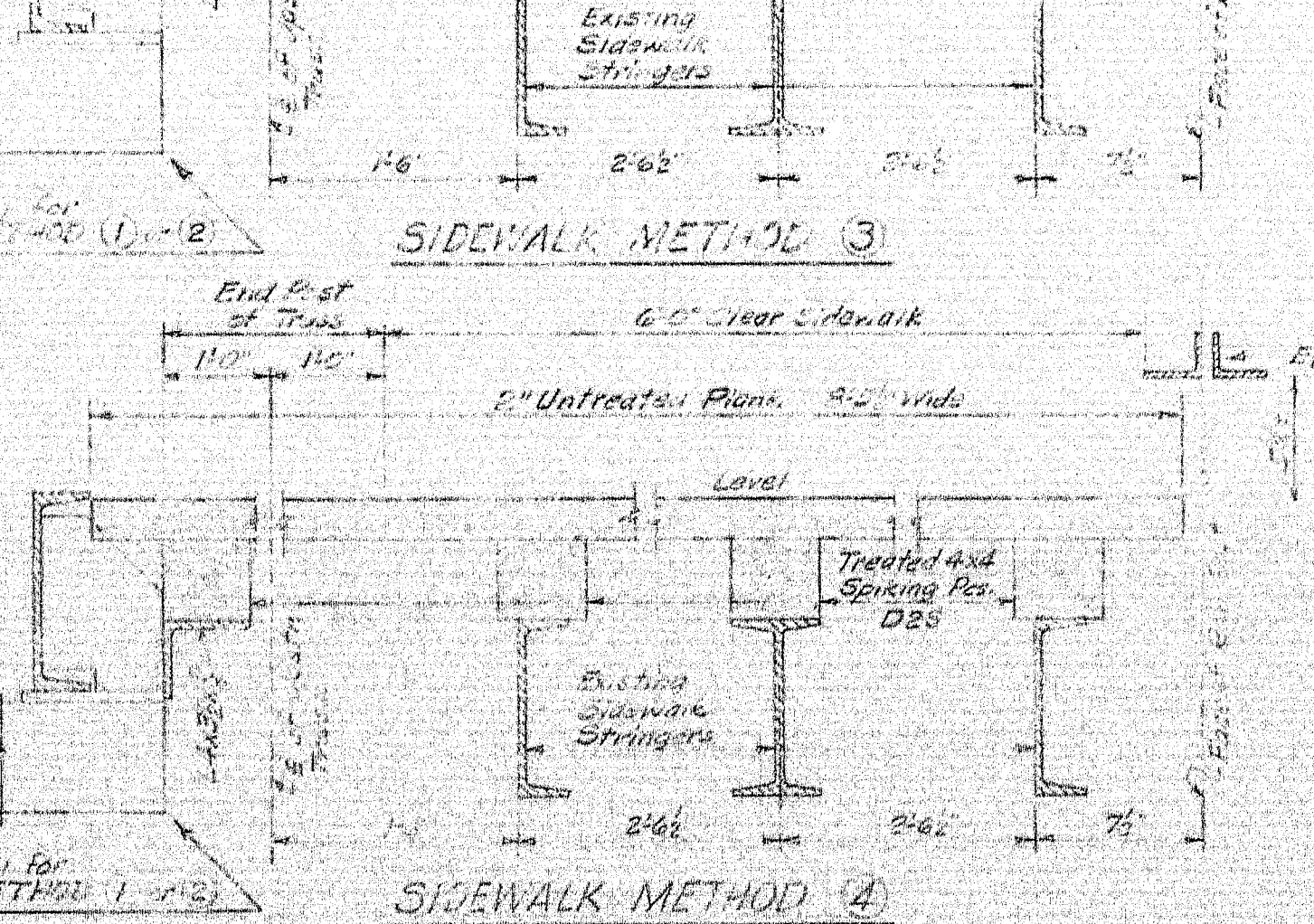
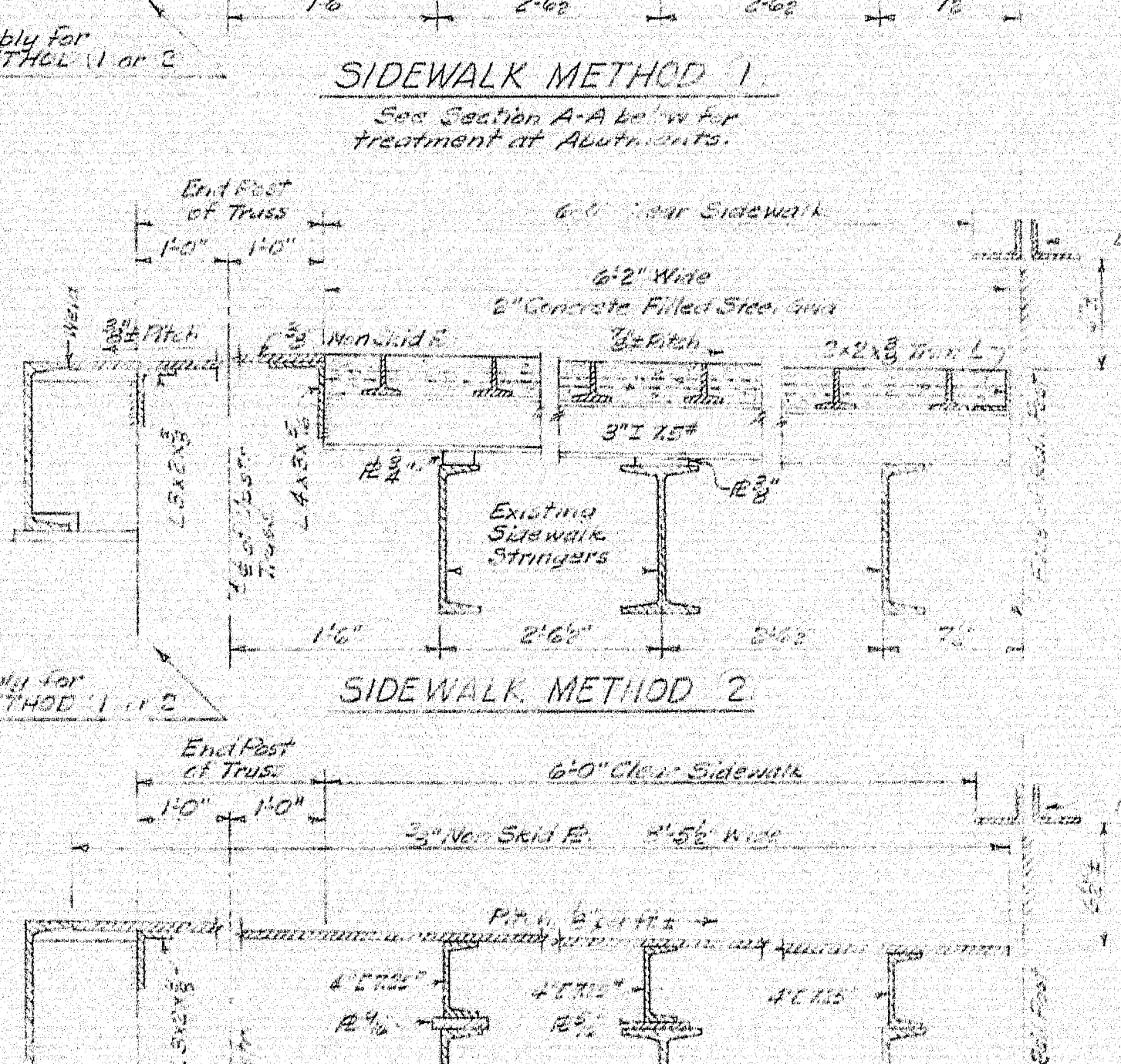


EXISTING MEMBERS			
	East.	Flg.	Webb
Floor Beams	24x77.9	7x13	2
Stringers	15x42.9	5x13	7/8
Sewer Str.	8x18.4	4x16	5/8
	3x11.5	2x8	1/2

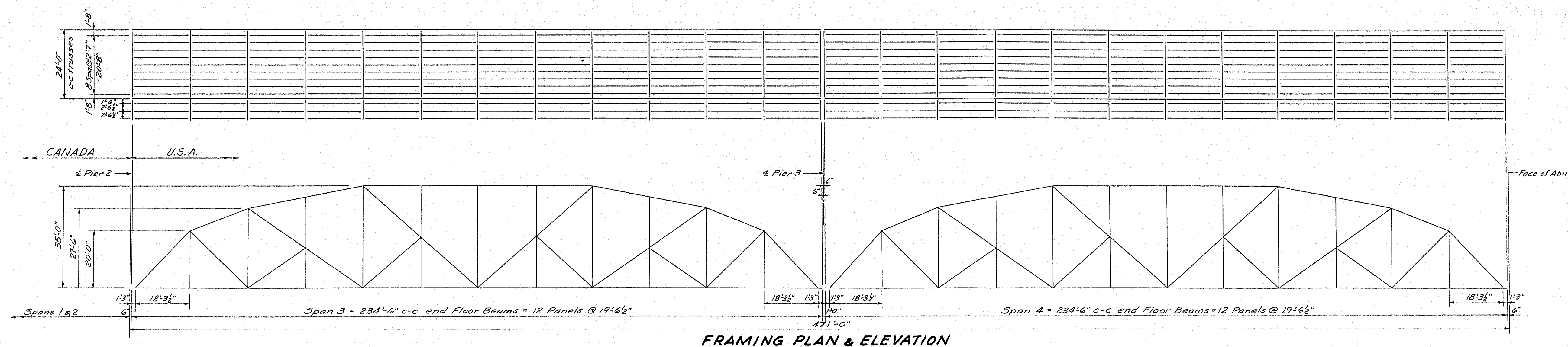
<u>FLOOR BEAM COVER PLATES</u>		
<u>METHOD</u>	<u>SIZE</u>	
(1)	Top Bottom	$\frac{3}{4} \times 5 \frac{1}{2}$ 2×8
2	Top Bottom	$1 \frac{1}{2} \times 5 \frac{1}{2}$ $\frac{3}{4} \times 8 \frac{1}{2}$
3	Top Bottom	$1 \frac{1}{2} \times 5 \frac{1}{2}$ $\frac{1}{2} \times 9$

<u>LOADING OF FLOOR BEAMS</u>		
<u>METHOD</u>	<u>EXISTING</u> (No Cover Req)	<u>CONTEMPLATED</u> (With Cover Req)
1	H-13½	4" ¹¹ / ₁₆ each H-20
2	H-3½	6½" ¹¹ / ₁₆ each H-20
3	H-5½	8½" ¹¹ / ₁₆ each H-30

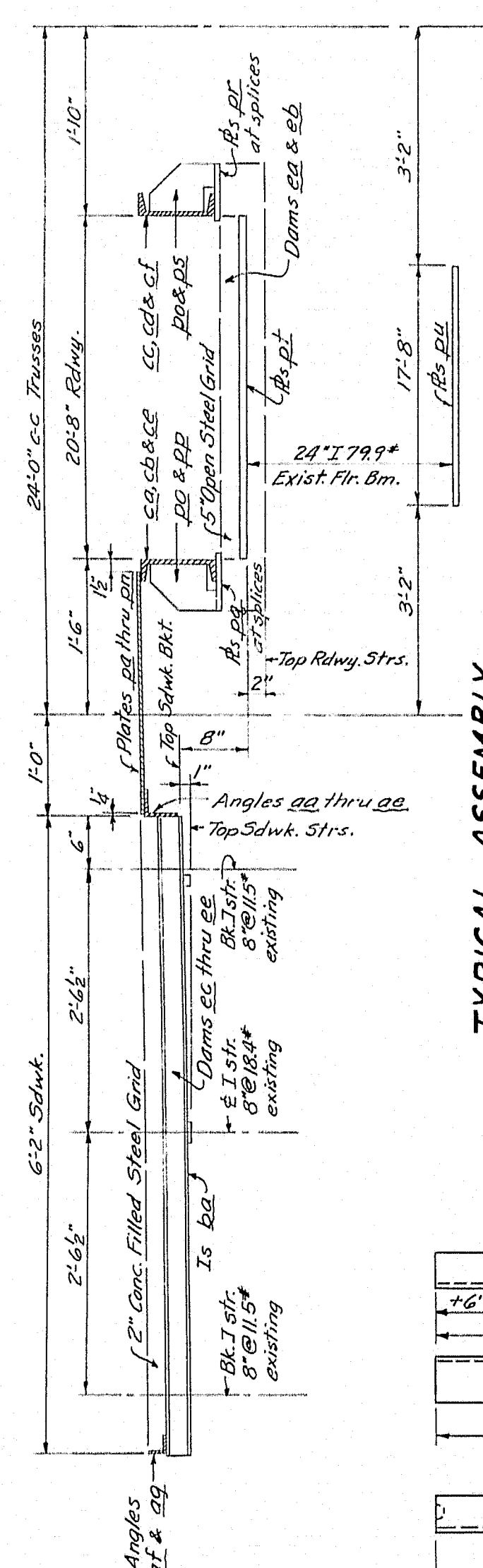
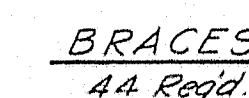
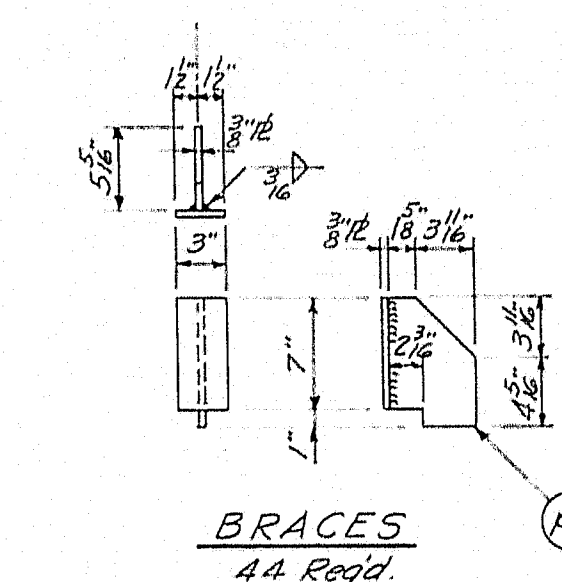
Inventory rating of existing stringers
connections is ample for all methods
at H-30.



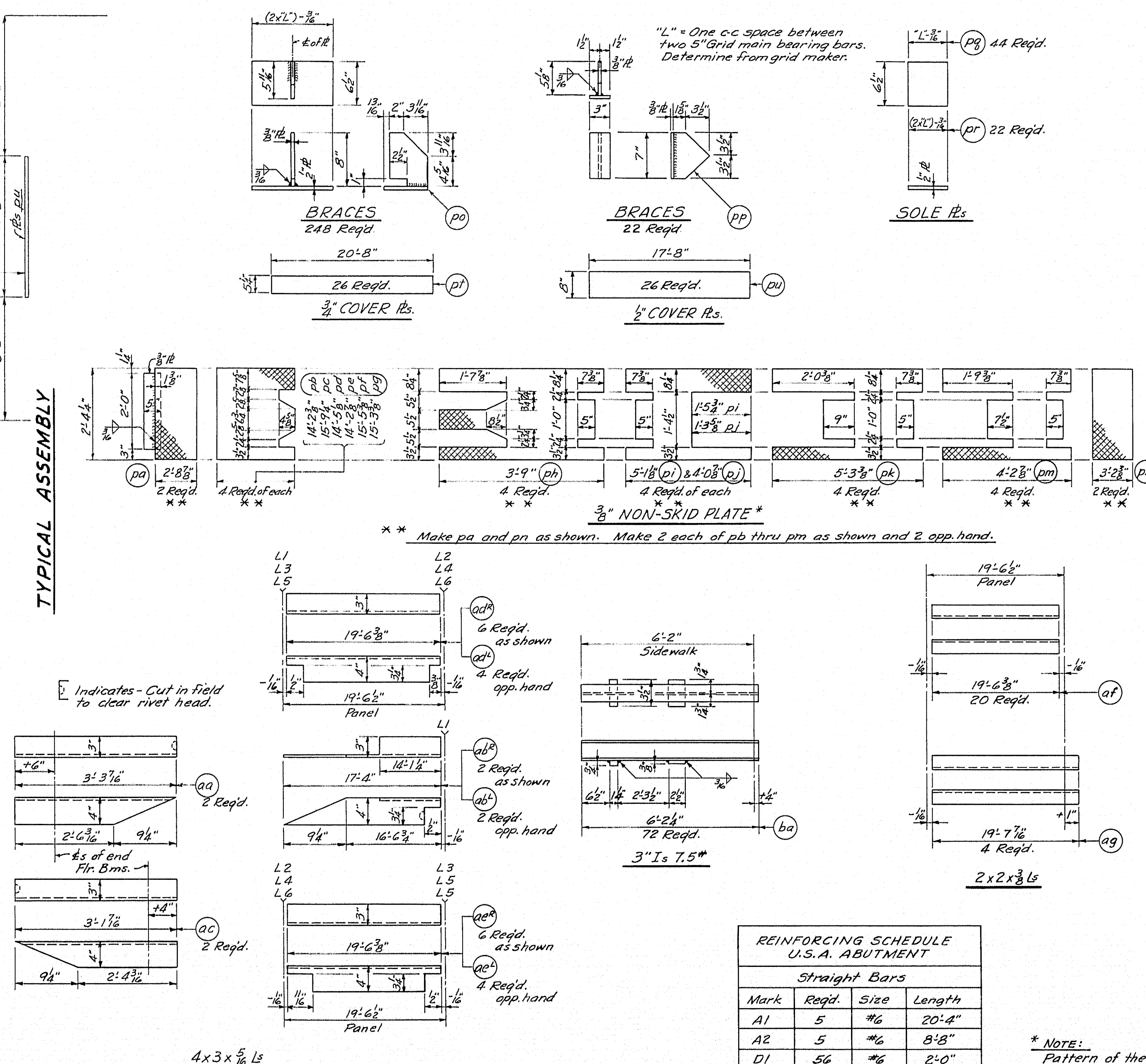
DESIGN - TRACE - CHECK -	BRIDGE NO. 2249 SURVEY PLOT -
STATE HIGHWAY COMMISSION BRIDGE DIVISION <i>INTERNATIONAL BRIDGE</i> <i>OVER THE</i> <i>ST. JOHN RIVER</i> <i>BETWEEN</i> <i>MADAWASKA, ME. & EDMUNDSTON, ME.</i> PRELIMINARY ESTIMATE FLOOR AND SIDEWALK RECONSTRUCTION	
SHEET 1 OF 1 AUGUSTA, MAINE FEB. 1960	



FRAMING PLAN & ELEVATION

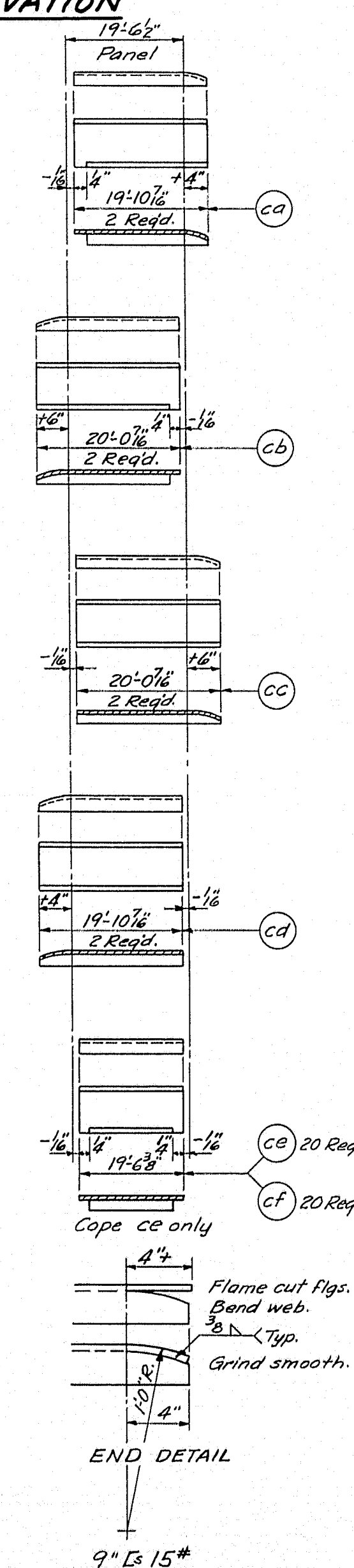


TYPICAL ASSEMBLY

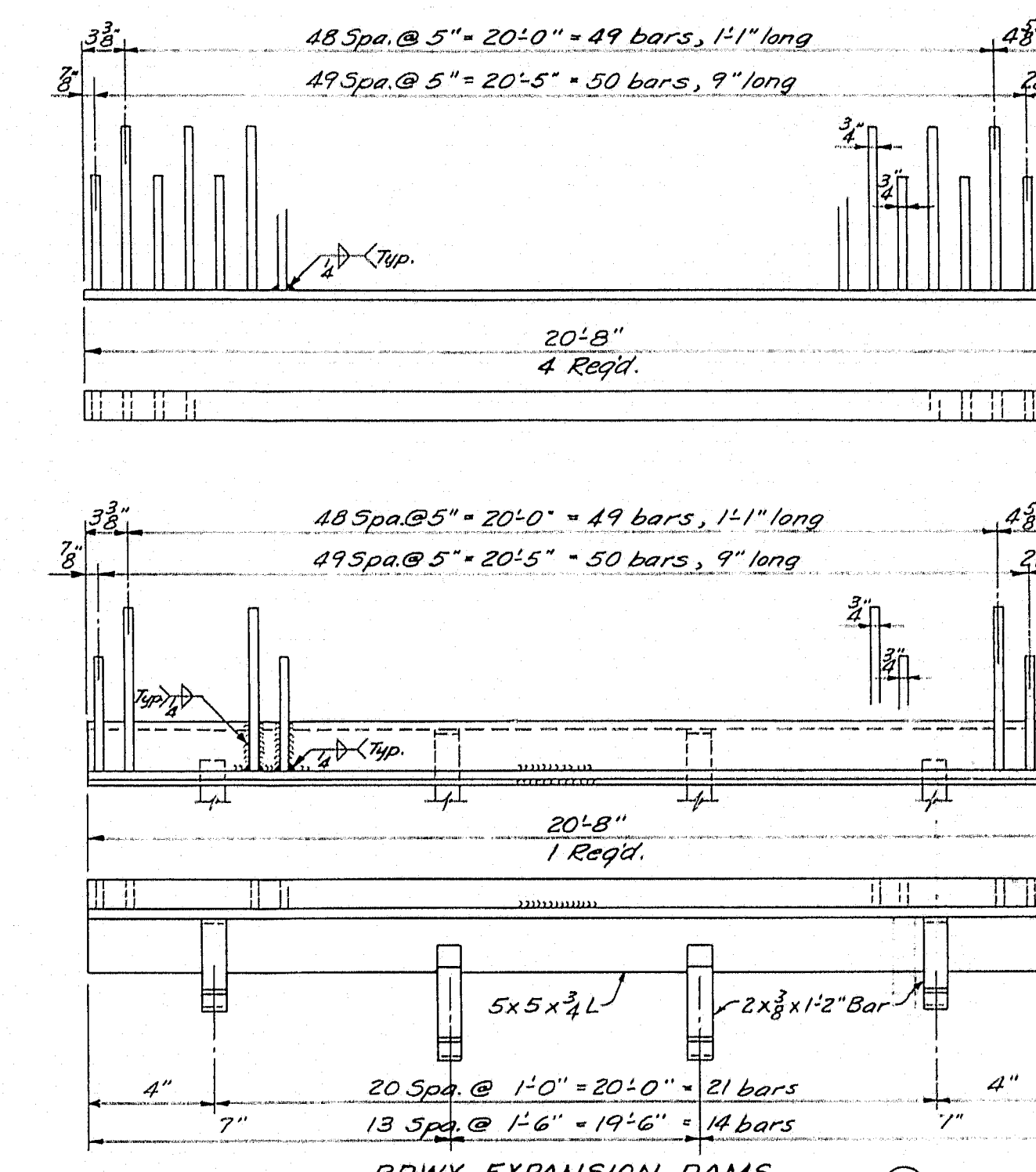


REINFORCING SCHEDULE U.S.A. ABUTMENT			
Straight Bars			
Mark	Reqd.	Size	Length
A1	5	#6	20'-4"
A2	5	#6	8'-8"
D1	5/6	#6	2'-0"

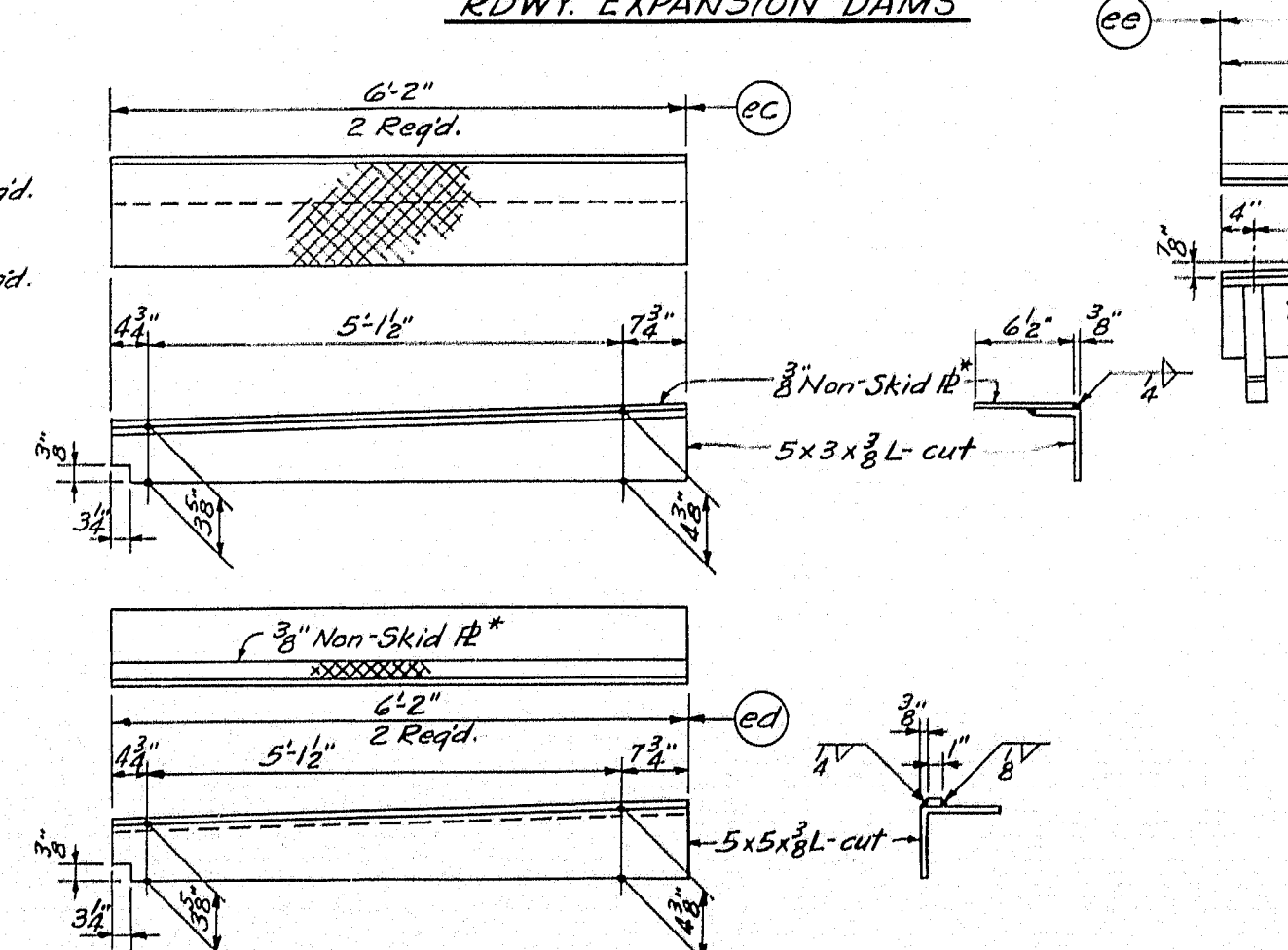
* NOTE:
Pattern of the Non-Skid Plate shall be submitted to the Engineer for approval before construction



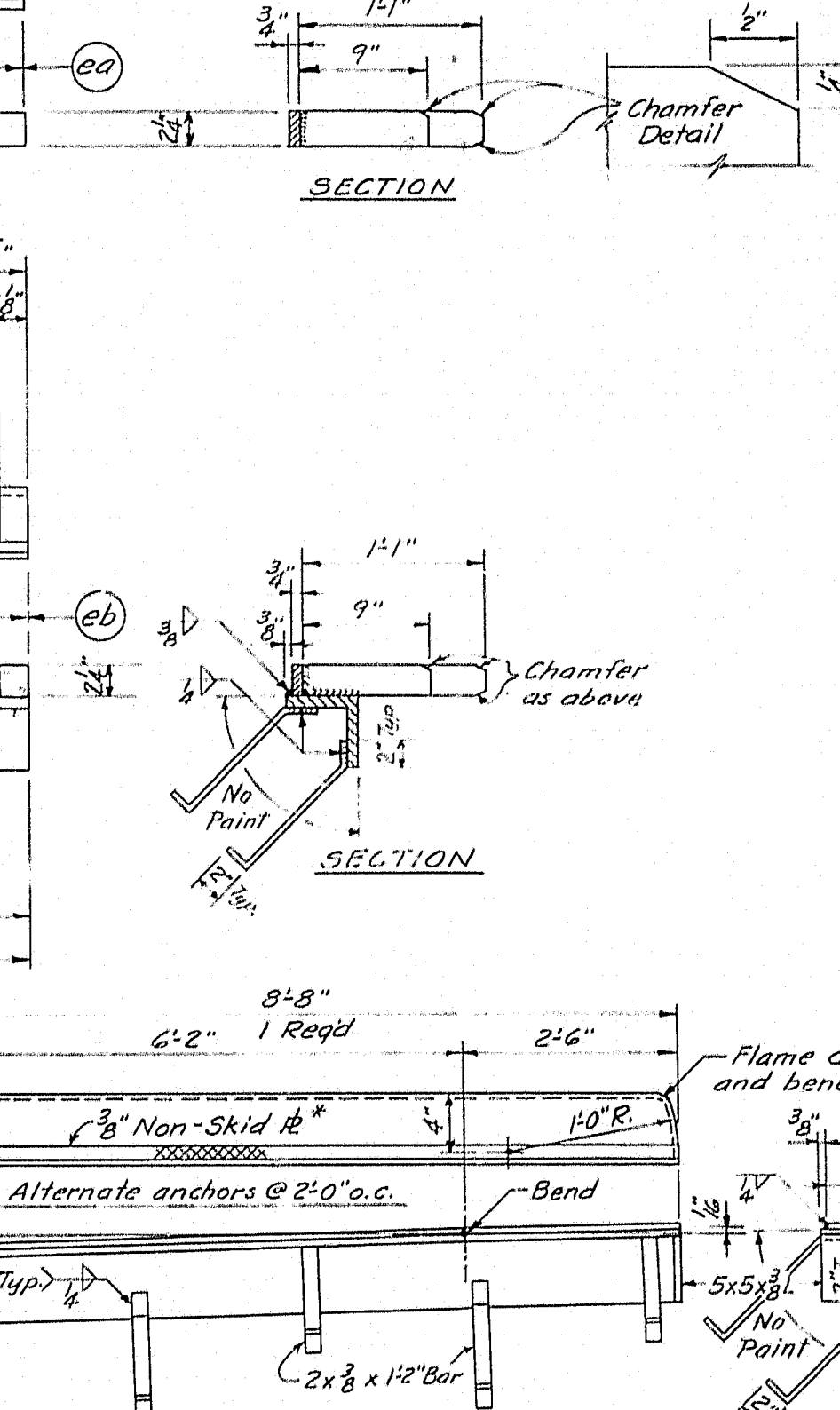
END DETAIL



RDWY EXPANSION DAMS.



SDWK. EXPANSION DAMS



SECTION

DESIGN- TRACE- CHECK-	HARRIS HARRIS PEABY	BRIDGE NO. 2399 SURVEY- PLOT-
-----------------------------	---------------------------	-------------------------------------

STATE HIGHWAY COMMISSION
BRIDGE DIVISION

INTERNATIONAL BRIDGE
OVER THE
ST. JOHN RIVER
BETWEEN
MADAWASKA, ME. & EDMUNDSTON, N.B.

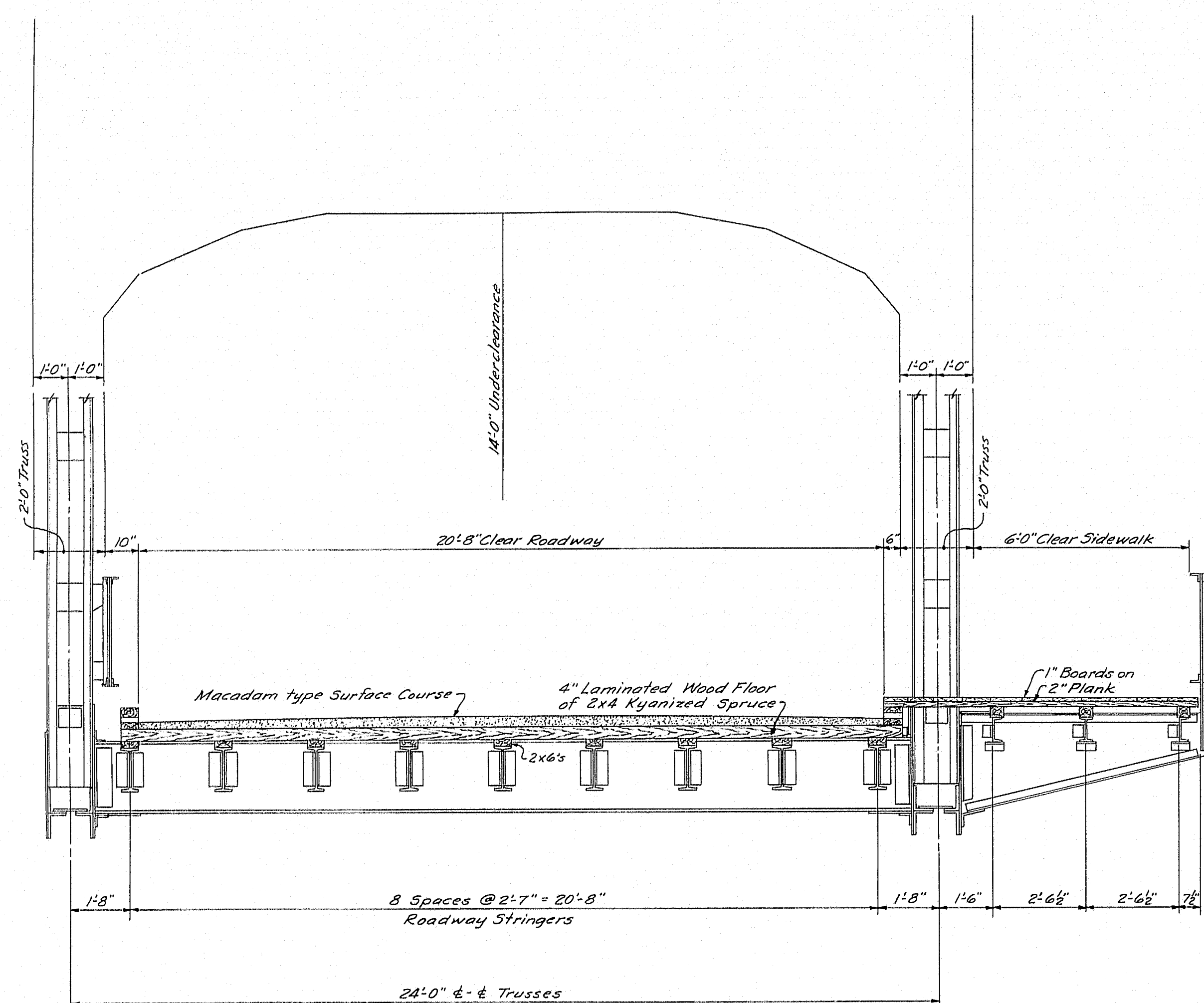
FLOOR AND SIDEWALK RECONSTRUCTION

STRUCTURAL STEEL

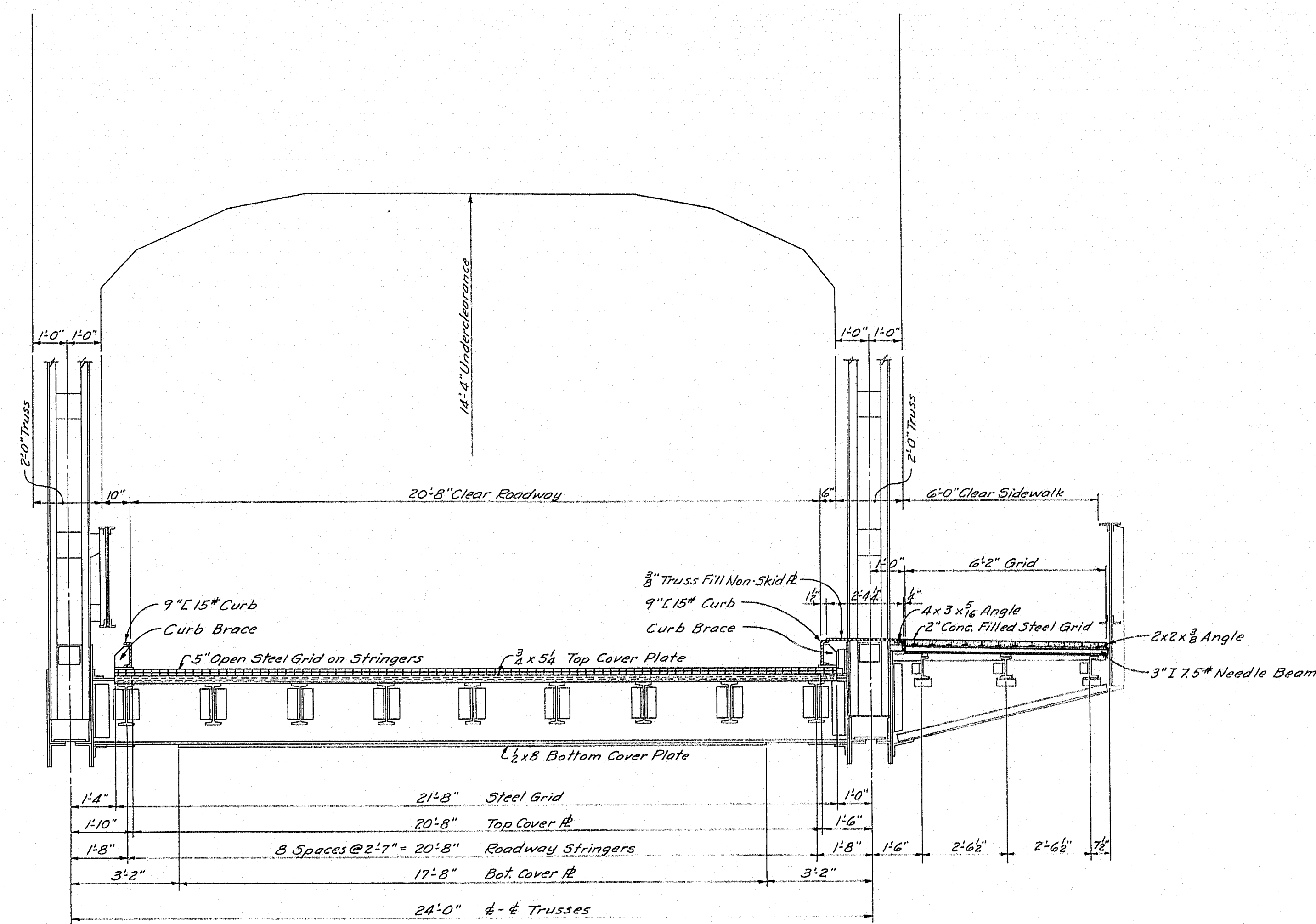
SHEET 2 OF 3 AUGUSTA, MAINE JULY, 1960



B. P. R. REG. NO.	STATE	PROJECT NUMBER	SHEET NO.	TOTAL SHEETS
1	MAINE			



**EXISTING
WOOD FLOOR**



**PROPOSED
STEEL GRID FLOOR**

SECTIONS THRU TRUSSES
Looking From Canada toward U.S.A.

DESIGN- HARRIS	BRIDGE NO. 2399
TRACE- HARRIS	
CHECK- PEARY	
STATE HIGHWAY COMMISSION BRIDGE DIVISION	
INTERNATIONAL BRIDGE	
OVER THE	
ST. JOHN RIVER	
BETWEEN	
MADAWASKA, ME. & EDMUNDSTON, N.B.	
FLOOR AND SIDEWALK RECONSTRUCTION	
EXISTING AND PROPOSED SECTIONS	
SHEET 1 OF 3	AUGUSTA, MAINE JULY, 1960

C. E. CO., INC. 279 24637

82-92

